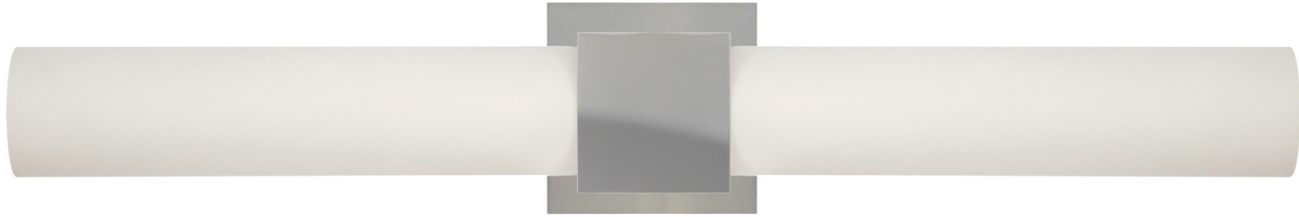


Block Twin Wall Long

Wall Sconce with two elongated blown opal glass shades. Die-cast aluminum body in polished chrome finish. Fixtures can be mounted horizontally or vertically.

Dimmable with ELV dimmer.



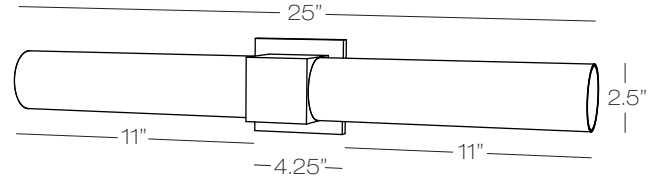
Model
WS015

Color	Finish	Lamp
OP	PC	GL8

OP opal

PC polished chrome

GL8 LED 8W, 3000K,
210mm, 1350 Lumens



Wall projection 3.15"

