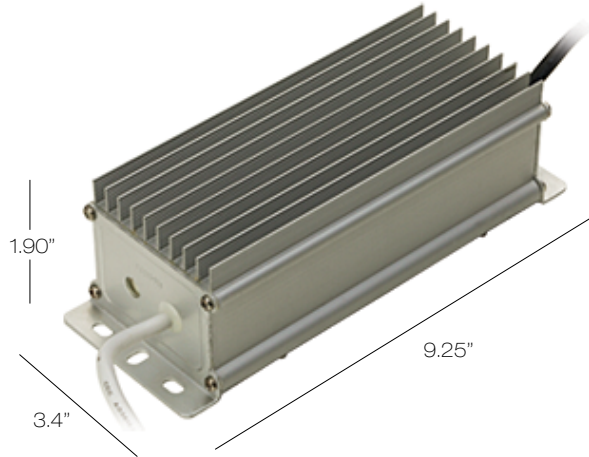


# 12V PWLEDTP12100



**DESCRIPTION**

*Dry Location Remote 100W 120V  
 No Load Output 12VDC 8.33Amp  
 No Load Output 24VDC 4.16Amp  
**LED COMPATIBLE** UL2108  
 Short circuit and thermal Protection  
 \* 277V available upon request*

**DIMENSIONS  
 LxWxH (in)**

9.25"x3.4"x1.90"

**MODEL NUMBER**

**12V  
 PWLEDTP12100**

**DIMMER TYPE**

*ELV  
 Incandescent  
 or  
 C-L Lutron  
 LED Dimmer*

